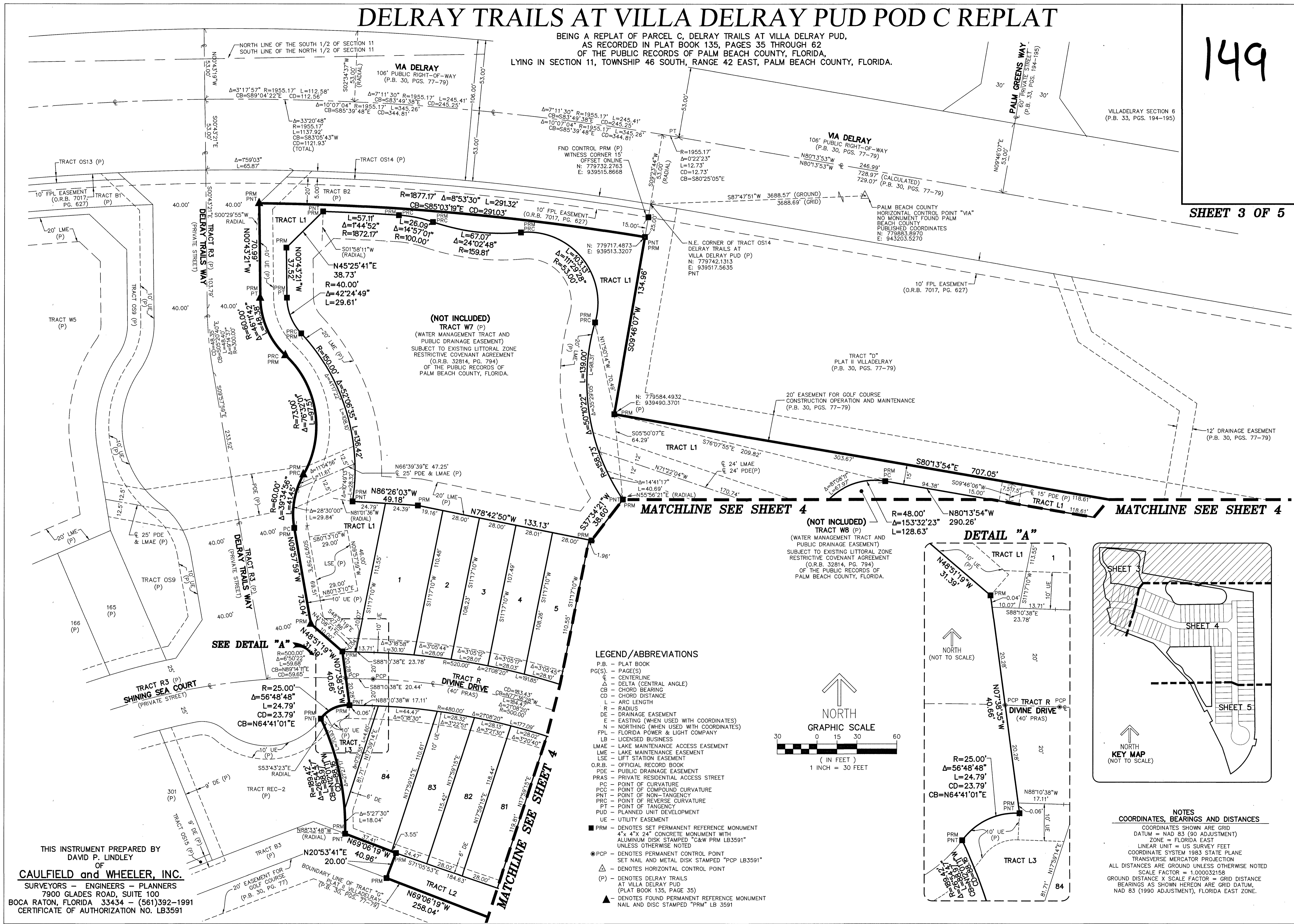


# DELRAY TRAILS AT VILLA DELRAY PUD POD C REPLAT

BEING A REPLAT OF PARCEL C, DELRAY TRAILS AT VILLA DELRAY PUD,  
AS RECORDED IN PLAT BOOK 135, PAGES 35 THROUGH 62  
OF THE PUBLIC RECORDS OF PALM BEACH COUNTY, FLORIDA,  
LYING IN SECTION 11, TOWNSHIP 46 SOUTH, RANGE 42 EAST, PALM BEACH COUNTY, FLORIDA.

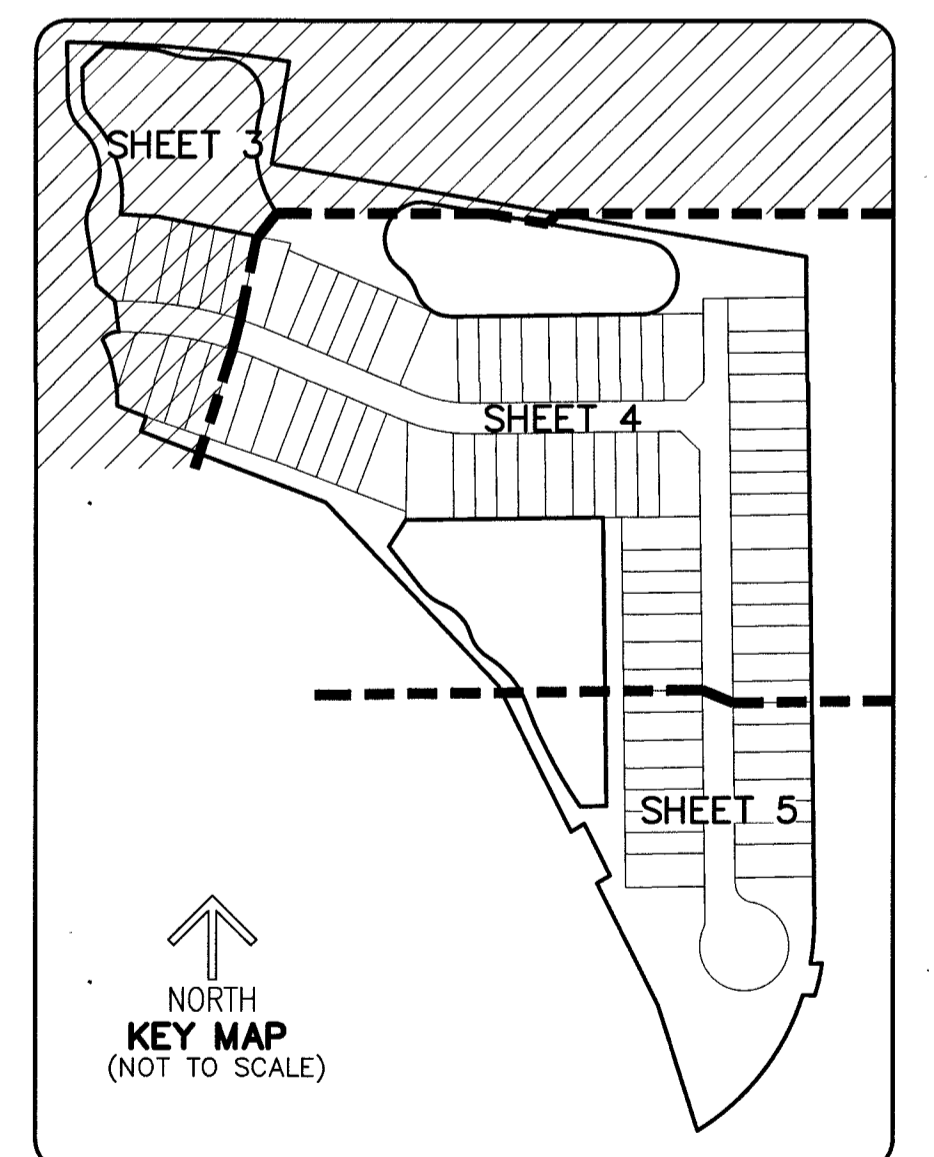
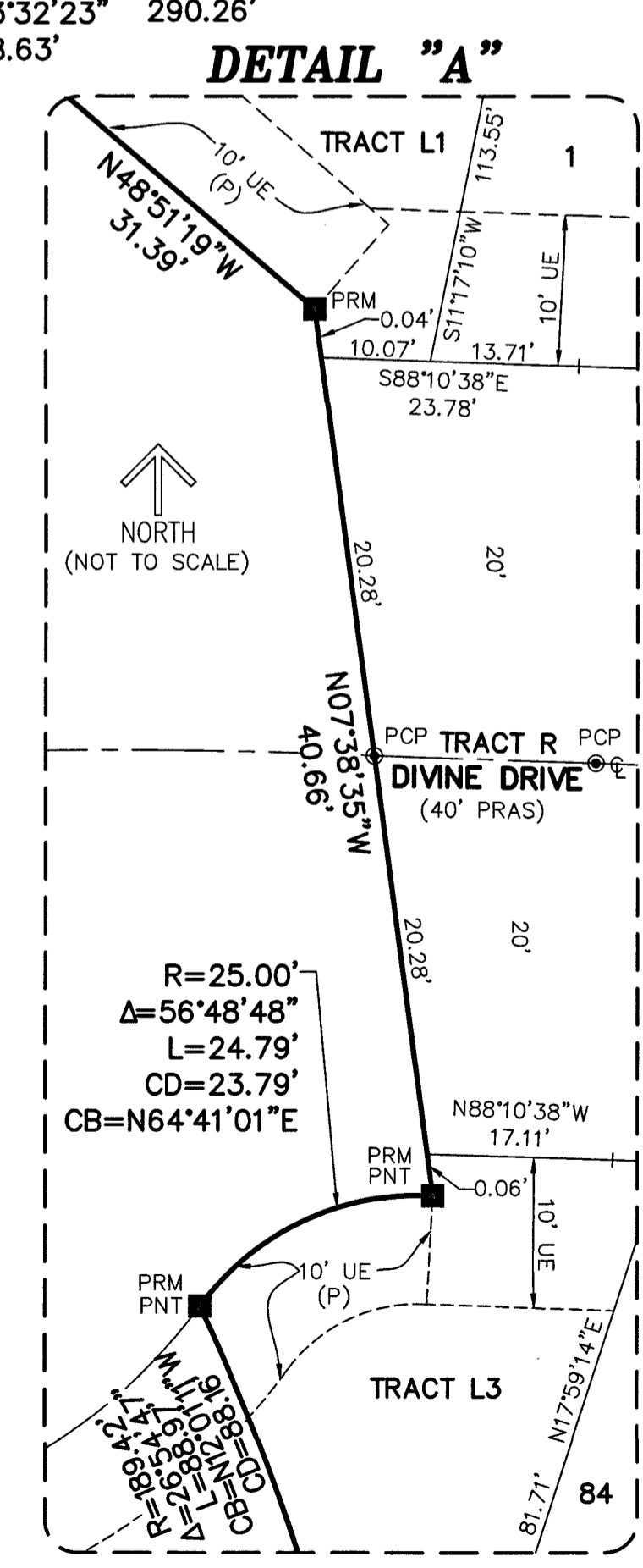
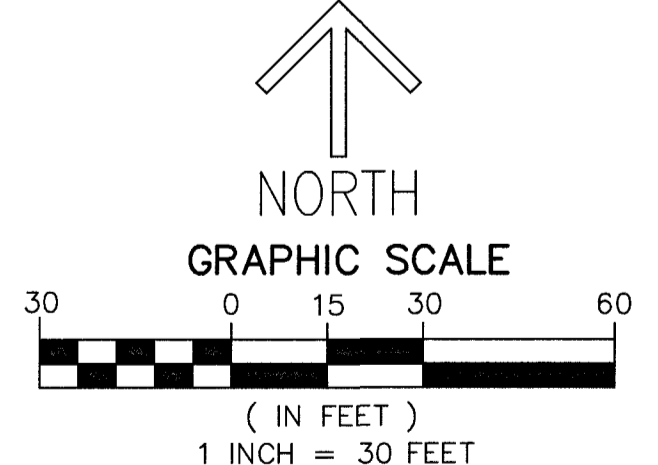
149  
SHEET 3 OF 5



(NOT INCLUDED)  
TRACT W7 (P)  
(WATER MANAGEMENT TRACT AND  
PUBLIC DRAINAGE EASEMENT)  
SUBJECT TO EXISTING LITTORAL ZONE  
RESTRICTIVE COVENANT AGREEMENT  
(O.R.B. 32814, PG. 794)  
OF THE PUBLIC RECORDS OF  
PALM BEACH COUNTY, FLORIDA.

(NOT INCLUDED)  
TRACT WB (P)  
(WATER MANAGEMENT TRACT AND  
PUBLIC DRAINAGE EASEMENT)  
SUBJECT TO EXISTING LITTORAL ZONE  
RESTRICTIVE COVENANT AGREEMENT  
(O.R.B. 32814, PG. 794)  
OF THE PUBLIC RECORDS OF  
PALM BEACH COUNTY, FLORIDA.

- LEGEND/ABBREVIATIONS**
- P.B. - PLAT BOOK
  - PG(S). - PAGE(S)
  - ⊕ - CENTERLINE
  - Δ - DELTA (CENTRAL ANGLE)
  - CB - CHORD BEARING
  - CD - CHORD DISTANCE
  - L - ARC LENGTH
  - R - RADIUS
  - DE - DRAINAGE EASEMENT
  - E - EASTING (WHEN USED WITH COORDINATES)
  - N - NORTHING (WHEN USED WITH COORDINATES)
  - FPL - FLORIDA POWER & LIGHT COMPANY
  - LB - LICENSED BUSINESS
  - LMAE - LAKE MAINTENANCE ACCESS EASEMENT
  - LME - LAKE MAINTENANCE EASEMENT
  - LSE - LIFT STATION EASEMENT
  - O.R.B. - OFFICIAL RECORD BOOK
  - PDE - PUBLIC DRAINAGE EASEMENT
  - PRAS - PRIVATE RESIDENTIAL ACCESS STREET
  - PC - POINT OF CURVATURE
  - PCC - POINT OF COMPOUND CURVATURE
  - PNT - POINT OF NON-TANGENCY
  - PRC - POINT OF REVERSE CURVATURE
  - PTI - POINT OF TANGENCY
  - PUD - PLANNED UNIT DEVELOPMENT
  - UE - UTILITY EASEMENT
  - PRM - DENOTES SET PERMANENT REFERENCE MONUMENT  
4" x 4" x 24" CONCRETE MONUMENT WITH  
ALUMINUM DISK STAMPED "C&W PRM LB3591"  
UNLESS OTHERWISE NOTED
  - PCP - DENOTES METAL CONTROL POINT.  
SET NAIL AND METAL DISK STAMPED "PCP LB3591"
  - △ - DENOTES HORIZONTAL CONTROL POINT
  - (P) - DENOTES DELRAY TRAILS  
AT VILLA DELRAY PUD  
(PLAT BOOK 135, PAGE 35)
  - ▲ - DENOTES FOUND PERMANENT REFERENCE MONUMENT  
NAIL AND DISC STAMPED "PRM" LB 3591



**NOTES**  
**COORDINATES, BEARINGS AND DISTANCES**  
COORDINATES SHOWN ARE GRID  
DATUM = NAD 83 (90 ADJUSTMENT)  
ZONE = FLORIDA EAST  
LINEAR UNIT = US SURVEY FEET  
COORDINATE SYSTEM 1983 STATE PLANE  
TRANSVERSE MERCATOR PROJECTION  
ALL DISTANCES ARE GROUND UNLESS OTHERWISE NOTED  
SCALE FACTOR = 1.000032158  
GROUND DISTANCE X SCALE FACTOR = GRID DISTANCE  
BEARINGS AS SHOWN HEREON ARE GRID DATUM,  
NAD 83 (1990 ADJUSTMENT), FLORIDA EAST ZONE.

THIS INSTRUMENT PREPARED BY  
DAVID P. LINDLEY  
OF  
**CAULFIELD and WHEELER, INC.**  
SURVEYORS - ENGINEERS - PLANNERS  
7900 GLADES ROAD, SUITE 100  
BOCA RATON, FLORIDA 33434 - (561)392-1991  
CERTIFICATE OF AUTHORIZATION NO. LB3591